



the SVLA BREEZE

YOUR SPRING VALLEY LAKE ASSOCIATION'S OFFICIAL MONTHLY NEWSPAPER FOR THE JEWEL OF THE HIGH DESERT

September 2016

Ads: 760-220-7096

**SVLA Board of Directors
have approved the
2016-2017
Annual Budget.**

**Look for your Financial
Disclosure packet
in October's mail**

INSIDE THE SVLA BREEZE

Board Message	pg 4
SVL Yacht Club.....	pg 5
GM Report.....	pg 6
Operations	pg 8
Public Safety.....	pg 10
Community Services.....	pg 11
SVL Veterans Club	pg 14-15
Coffee Break Club	pg 15-16
Luau Snapshots.....	pg 18
Planning Committee	pg 20
Concert Snapshots	pg 22
Community Events	pg 30



September 8, 2016

Roadwork Ground Breaking Ceremony



The 2.16 mile project will begin construction in early September, and end construction in mid-to-late October.

- Asphalt concrete overlay paving along Kalin Ranch Drive, from Spring Valley Parkway to Arrowhead Trail. The work on Kalin Ranch will also include road removal and reconstruction at the intersections.
- Asphalt concrete overlay paving along Country Club Drive, from Spring Valley Parkway to Riverview Drive.
- Road removal and reconstruction along part of Pay-Ute Road from Ridgecrest Road to Spring Valley Parkway, and asphalt concrete overlay paving along the cul-de-sac segment of Pah-Ute Road that runs just east of Spring Valley Parkway.





Spring Valley Lake Contact Information

Management Staff

General Manager

Glenn Grabiec: ggrabiec@svla.com

Director Public Safety

Alfred Logan: alogan@svla.com

Director of Operations

Dennis Teece: dteece@svla.com

Director Administration & Human Resources

Jeaneen Beam: jbeam@svla.com

Director of Community Services

Paul Beam: pbeam@svla.com

Accounts Manager

Dee Dee Walker: dpoudrier@svla.com

Board of Directors

President Stephen Garcia

Vice President Amy Stanton

Secretary Christopher Huntingford

Treasurer John D. Smith

Director Loran Keith

Director Robert McCoy

Director Jonathan Tasker

Board Email: board@svla.com



the SVLA BREEZE

SVLA Breeze

PO BOX 1079

Helendale, CA 92342

760-220-7096

President - Publisher

Deanna Love

Editor/

General Manager

Jaime Earl

Published monthly at:

Silver Lakes

PO Box 1079

Helendale, CA 92342

Advertising

Email

contact:

LoveMediaGroup

@yahoo.com

The acceptance of an ad in the SVLA Breeze does not constitute approval of SVLA Breeze or Spring Valley Lake Association, but it is solely the view of the advertisers. Letters to the Editor and articles submitted by Spring Valley Lake residents do not necessarily reflect the opinion or the endorsement of the publishers of SVLA Breeze or Spring Valley Lake Association but rather are the responsibility and opinions of the authors of those articles. SVLA Breeze will always try to give equal time to those who submit to us articles or letters with a differing opinion than the articles featured in this paper. Any ad placed with Love Media must contain a sponsor, a product or announcement. The exception to the rule would be a person running for political office. Ads of complaints against the Association or any business, or personal attack ads will not be accepted.

SVLA Administration Office
13325 Spring Valley Parkway
Spring Valley Lake, CA
92395-5107

Mailing Address:
7001 SVL Box
Spring Valley Lake, CA
92395-5107

Association Office:
760-245-9756

Fax Line:
760-245-3076

Website:
www.svla.com



Association office hours:
Tuesday - Friday
7:30 a.m. to 6:00 p.m.

Public Safety:
12975 Rolling Ridge Drive
Spring Valley Lake, CA 92395
Open 24/7/365
Direct Line: 760-245-6400

Additional Services:
Architectural/Code
Enforcement:
760-245-9756
CE@svla.com

Marina Hours:
(October - April)
6 a.m. - 10 p.m.
(May - September)
6 a.m. - 12 Midnight

Equestrian Center:
760-245-9756
12660 Indian River Drive
Apple Valley, CA 92308
Arena Hours: 8 a.m. - 10 p.m.

In Case of Emergency dial:
911

Emergency Contact #s:
SB County Animal Control:
800-472-5609
A.V. - 760-240-7000 x7555

Apple Valley Fire Protection
District (Equestrian Estates):
760-240-7618

Apple Valley Sheriff Station
(Equestrian Estates):
760-240-7400

SVL Fire Station (Lakeside):
760-245-1100

California Highway Patrol:
760-255-8750

San Bernardino County
Sheriff's Department:
760-245-4211

Numbers FYI:
County Code Enforcement
Violations pertaining to County
rules and regs:
760-995-8140

County Building and Safety
New housing construction, struc-
tures built on property:
760-995-8220

(SBC) Planning Dept.
760.995.8140
Town of Apple Valley
(EQ side only): 760-240-7000

Department of Public Works
Water / flood control
760-995-8220

Graffiti Removal:
SB County: 760.995.8140
Apple Valley: 760-240-7000
x7560

San Bernardino County
Environmental Health Services
(Vector Control)
800-442-2283



The SVLA Breeze has incorporated QR Codes into our newspaper. A QR ("Quick Response") Code is a mobile phone readable barcode. Simply point a mobile phone (or other camera-enabled mobile) at it. If the device has had QR Code decoding software installed on it, it will bring up its browser and go straight to that URL. QR Code Reading Apps are available from your Smartphone App Store.

Email Inquiries, Articles, Editorials for The SVLA Breeze to: info@svla.com

Hemanshu Patel, M.D.

Board Certified Family Practice

Welcome to our community.

Dr. Patel will be taking over
Dr. Bekemeier's practice
starting September 1st

13010 Hesperia Rd, Suite 600
Victorville, CA 92395
760-881-3717



**Please welcome Family Practice Physician,
Dr. Hemanshu Patel to the High Desert community.**

Dr. Patel is a highly motivated physician that is proud and honored to be serving the High Desert community. Dr. Hemanshu Patel completed his medical training at the rigorous and prestigious family medicine residency program at the University of Alabama.



For more information or to become
a patient please call 855-834-4855.



SVLA BOARD PRESIDENT

STEPHEN GARCIA

End of summer means a few things to me. First off, all of our children are returning back to school, whether it's the little ones headed out of the house for the first day of Kindergarten, or moving your older ones into a dorm room in another city or state. It's that time of year to get back to work and school after some well-deserved vacation time. Please be extra aware as we have many bus stops and cross walks in and around our community. Make sure to pay extra attention and look twice before passing these areas, as we want our loved ones to return home safe.

End of summer also means another budget cycle for all of us who live in SVL. This year a new budget means a very modest increase in the 2016-2017 assessments for us all. The Board held a budget workshop on Saturday, August 20th where the Board and community had an opportunity to ask and answer question about the proposed budget.

Alfred Logan, acting General Manager, presented the proposed association budget. Deedee Garcia, Chair of the Budget Review Committee, gave the committees' recommendation based on the committees' findings. Both the


Association staff and the review committee did an outstanding job of helping the board and community members in attendance understand the budget. This work is much appreciated and both groups did outstanding work.

On Tuesday evening, the 23rd of August, during the general open meeting, the Board again had lengthy in-depth discussion on the Associations proposed budget. The Association is in outstanding financial health. We have our reserves funded to 54%, working towards 60% recommended by our auditing firm. We have capital projects funded and "Tee'd" up ready to move forward. We are increasing staff where needed and are able to provide adequate pay and benefits that help us retain the professional staff we have.

Copies of the board approved budgets will be mailed out to all association property owners by the first week of October. Please review the budget and take the time to understand it. The budget depicts a road map of our fiscal stability as a community. I believe we are headed in the right direction; however, the board was split on this modest increase and voted 4 in favor and 3 opposed to adopt the budget which will increase the

current assessment from \$1,056 to \$1,060 per year.

Lastly, I want to encourage everyone to try and attend the Hoedown at the Equestrian Estates

Club House on October 1st at 6:00 PM. Live music, good food and great neighbors will be on the menu. Come out and celebrate the start of the fall season. This is one event you won't want to miss. 



Hoedown

Saturday
October 1, 2016

5:30 PM - 10:00 PM

EQUESTRIAN CLUBHOUSE 12660 INDIAN RIVER DR.

Live Entertainment By: Jimi Nelson Band

BBQ Catered Dinner

BOUNCE HOUSE MECHANICAL BULL BARN TOUR

CORN HOLE PHOTOBOOTH FACE PAINTING

\$13.00 Members \$18.00 Guests

\$7.00 Children 5-12 Children 4 & under Free

DRINKS STARTING AT \$1.00

Call for reservations by Sept 27, 2016 760.245.9756



P
O
K
E
R



POKER RUN



P
O
K
E
R



2016



4th Annual Charity Event Sept 24th 2016



Location: East Beach

Registration: 11:30 am to Noon

Charitable Donation: \$10.00 (multiple entries allowed)

Prizes: \$100.00 Grand Prize & Trophies for Highest Hands



SVL Membership Passes are Required



Activities: Monthly Meetings,
Boat Cruises, Non-Powered
Regatta's & Much More...



SVL Yacht Club



For More Information
Contact Dean Von
760.927.2226
commodore@svlyachtclub.org

Visit us at: www.SVLYachtClub.org



As we wind down from the summer season, I wanted to give everyone an update on the latest happening in the association. This season was very busy for us, but we still made great progress on all of the projects we had planned for this year:

Meadowlark Park – As we continue to receive feedback from the community as to what they would like included in the park plan, the Board of Directors has authorized us to seek a qualified architect to get started. We have interviewed several and believe we have found one that will embrace the vision that we have for the park!

Budget – The budget for the next fiscal year has been approved. I am pleased to announce that through our diligent efforts at assessment collection, attention to managing expenses and a continued eye at cost-saving measures, next year we will only see a \$4.00 annual increase from \$1056. to \$1060. per year! Even with this minimal increase, we will still be on track to continue improving our community infrastructure.

follow through with the capital improvement list and expand on our ability to provide great services!

Roads – I am also very pleased to announce the Phase II road improvement project is kicking off this month! The County of San Bernardino is going to be rehabilitating Country Club, Kalin Ranch and Pah-Ute. This much-needed project is due to the great collaboration and diligent effort by Supervisor Robert Lovingood to bring attention to our aging roadways.

Fishing Areas – Our Operations Department is continuing to work on improvement of the fishing areas. This includes removal of invasive trees, removal of grass resulting in the association receiving Cash for Grass reimbursement and providing for safer and more beautiful recreational areas.

Events – Even though our busiest part of the season is over, we still have several events upcoming! Keep an eye on the Breeze and our Facebook page for notices of these fun events. 



**GUESTS WITH A VALID GUEST PASS
CAN VISIT THE BEACH AND PARKS BY
THEMSELVES?**



Membership cards and/or guest passes are required at all Association common areas for everyone 12 and older. The thing many people do not realize is that guests can visit the beach and parks by themselves without the owner being present. Fishing areas do require a member with a valid photo membership card to be present with the guests, but feel free to send your guests to the beach or parks to enjoy a day, whether you are able to attend or not.





Dr. Joseph E. Eiswert D.M.D.

Temple University Graduate,
USAF Captain
Family Dentistry

**Family Dentistry,
Implants &
Orthodontics**

Each one of our patients is unique... with unique needs and concerns. We offer all of the services you would expect and need from a competent dental office. If you have any questions about any of the services below, please give us a call.

- PREVENTATIVE CARE
- DIGITAL X-RAYS
- COSMETIC DENTISTRY
- MINI DENTAL IMPLANTS
- LUMINEERS®
- PORCELAIN VENEERS
- DENTAL CROWNS/BRIDGES
- ZOOM TEETH WHITENING
- COSMETIC DENTISTRY
- INVISIBLE BRACES BY INVISALIGN + CLEAR CORRECT
- ENDODONTICS/ROOT CANAL
- VIZILITE PLUS®
- RESTORATIVE DENTISTRY
- REPLACEMENT FILLINGS
- ORTHODONTICS
- IMPLANTS
- CHILDREN AND INFANT CARE

Silver Lakes

**27170 Lakeview Dr., Ste 203
Helendale, CA
245-5704**

After Hours Emergency, Contact Dr. Eiswert via mobile # 760-954-7012



- SEALANTS
- PRIMARY TMJ TREATMENT
- FILLINGS, ROOT CANALS
- SPORTS DENTISTRY
- PERIODONTAL/GUM DISEASE
- SMILE ENHANCEMENT
- ORAL SURGERY
- DENTURES/PARTIALS
- EXTRACTIONS/WISDOM TEETH
- TRAUMA
- PLAYSAFE®
- MOUTH GUARDS
- BONE GRAFTS

Apple Valley

**19063 Hwy 18, Suite 102
Apple Valley, CA
242-7800**



Financing Available
Most Insurance
Accepted
Always Accepting
New Patients



Fishing Area Upgrades

We have one last fishing area that was part of our 2015-2016 budgeted Fishing Area upgrades for this year. This is fishing area 10. This will also be the last fishing area as part of our cash for grass program started with the Mojave Water Agency. Once fishing area 10 is complete, MWA will be presenting SVLA with a check for \$21,785. This is all part of the Department of Water Resources grant where we can receive a cash rebate for removal of grass, and replacement with desert-wise landscaping. We have not budgeted for any other fishing area upgrades for the 2016-2017 budget year. These fishing areas will have received 12 new palm trees, over 90 drought tolerant plants, most with colored blooms, and well over 100 landscape lighting fixtures. Some of the fishing areas were able to keep their existing trees. The original intent was to provide a nice flat waters edge instead of the over 8 percent, in most cases, descending hill at the waters edge. We did this by providing a 12' wide flat concrete edge along the shore line. We also added a 10' x 20' cantilever deck at 2 of the fishing areas for fishing, bird watching or just a leisure in-take of the view. I would like to thank our maintenance staff

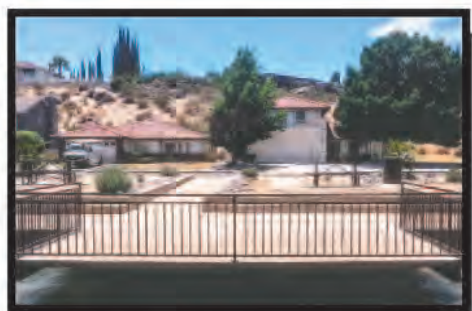
for their labor to get these fishing area upgrade completed with the \$45,000 budget set for these (4) upgraded fishing area, which did not include the Fishing Area 8 restroom.



Upgraded fishing area 12



Upgraded fishing area 15



Upgraded fishing area 4

Speaking of fishing area 8, we have completed the engineering and design of the camera that will provide video surveillance of the area and look forward to installing the cameras this month.

At the Equestrian Estates

We are getting ready for our Family fun Hoedown held at our Equestrian Estates on October 1, 2016. This event is great family fun with games, food and music. Please make reservations by contacting our office at (760) 245-9756.

OUR LAKE



As we finish up summer around the lake, we continue with our monthly lake water quality monitoring as well as open communication with our lake consultant. With our attention on other lake closures and warnings of toxic blue-green algae blooms, we are glad to report a consistently improving clarity program. Some of the measurements we take are:

Dissolved Oxygen (DO): Amount of diatomic oxygen dissolved in the water. We take this measurement at 2 foot incremental depths to the bottom which averages to only 9 feet deep. Our Dissolved Oxygen in August was over 7 at 10 feet deep. Anything over 5 will support most fish and invertebrates; so over 7 is good.

Phosphorus (P): Essential nutrient often correlating to growth of algae in freshwaters. Total Phosphorus (TP) is the measure of all phosphorus in a sample as

measured by persulfate strong digestion and includes: inorganic, oxidizable organic and polyphosphates. In August we measured on average .04mg/L which is considered eutrophic; but in our lake history this is considered good.

Nitrogen (N): Essential nutrient that can enhance growth of algae. Total N is all nitrogen in the sample (organic N+ and Ammonia) determined by the sum of the measurements for Total Kjeldhal Nitrogen (TKN) and ionic forms. In August we measured 1.8mg/L which is moderate and again good based on the history of our lake. All of this information can be found on our website. The nutrient results, temperatures and monitoring can help us also foresee a possible algae bloom. We do have high nutrient loads historically, and as reported over our 45 year history and multiple scientific case studies done on our lake. The high nutrient loads we see come from the Fish hatchery, which is part of our water flow, from storm drain run off, from leaves and grass clipping and other debris that find their way into our lake. They settle to the bottom (debris) and will release P as they decompose. High DO levels slow the release of P. The Alum treatments remove P from the water and captures it as it is released from the debris. More on our lake next month.



Sonshine Collision Services, Inc.

The safe choice since 1984



Make the Safe Choice! YOU choose who you want to repair your car!

When you need collision repair, the safety of you and your family should always come first. Inexpensive or careless repairs can result in the failure of your vehicle's safety restraint system, when you need it most... at the moment of impact in an accident.

At Sonshine Collision Services, you'll receive the kind of service, quality, and integrity that ensure your repairs will not only preserve your vehicle's value and factory warranty, but protect you and your family as well. Remember: You, the consumer, have the right to make your own choice. So, make the RIGHT choice... make the SAFE choice... Call Sonshine Collision Services, Inc.

TWO LOCATIONS to SERVE YOU

Sonshine Auto Body

17200 Jasmine St., Victorville, CA 92395

(760) 243-3185

Monday - Friday 8:30am to 5:00pm

Saturday 8:00am to 1:00pm

Sonshine Auto Body - NORTH

16611 Mojave Dr., Victorville, CA 92392

(760) 245-3183

Monday - Friday 8:00am to 5:00pm





ALFRED LOGAN, PUBLIC SAFETY DIRECTOR



Seasonal Employees

Although September 5th was our seasonal staff's last day of providing exceptional service to our community, our department would like to take a moment to thank all seasonal employees for their hard work. The Lifeguards and Patrol Officers did an amazing job keeping our amenities safe this summer with no significant issues to report. Residents, please keep in mind that the beach area will no longer have lifeguards on duty, so please be cautious with any of your guests that have limited swimming abilities. Our officers will continue to do checks for SVLA membership cards. As always, we are looking to improve and excel in our services for the community. If you have any questions or concerns please email me at Alogan@svla.com.

Residential Security

Although our crime rate is low compared to surrounding areas, we want it to be even lower. With cameras and 24 hour Public Safety, SVL is not a top pick for criminals. We want to send the message out that SVL is not an ideal place for theft to occur. But first, we must work as a unified community to decrease such crime. Imagine if each resident took a proactive approach to decrease the probability of a residential burglary. Well, here are a few steps to consider: How is the lighting around your home at night? Do you have motion sensors lights? Do you have an alarm system? Do you have any cameras installed? Do you have a dog that barks at unknown individuals that approach your home?

Depending on your budget, you

can take any of the above steps to improve the security of your home. Improving your home security does not have to happen all at once. Taking a proactive step now is what's really important.

Here are a few interesting facts about security systems:

"The FBI burglary rates of homes states that 1 in 3 homes without a security system will fall victim to a burglary as compared to 1 in 250 homes that do have a security system."

"Only 14 percent of U.S. residents have an antiburglar alarm protection system installed in their homes."

"Fifty-nine percent of home burglaries occur during the day while residents are at work or at school, and homes with a lot of cover, such as from trees, fences, and gardens, are most commonly broken into. Most breakins occur in July and August, and February has the least amount of breakins on average. Statistics show that more than 95 percent of burglaries involve breakin by force, such as by

breaking a window or door lock. In many cases, a security system could prevent homes from becoming a part of these statistics."

Scouting for Adventure?



Join Venture Crew 257

Co-ed Scouting program designed for high school students (Anyone age 14-20 can join)

6-8pm Meets Every Thurs. (Except the 2nd Th.)

SVL Community Building 12975 Rolling Ridge Dr.



STEM Program

We incorporate the scouting STEM program into a majority of its activities. If you aren't into STEM, don't fret! We leave the boring stuff for school! The crew also checks out the different STEM careers.



Join us!

We have a variety of activities outside of meetings, such as hiking and going to concerts.



Help the Community

We help out by putting flags up on national holidays, doing food drives, and cleaning up our community.

For more information contact: Casey Hillers (VP) 760-780-7828 caseyhillers@gmail.com,

Luke Rodriguez (VP) 760-885-9830 rodriguezluke@live.com, Rick Cates (Crew Advisor) 760-983-6555 mcates@msn.com

**CODE ENFORCEMENT
MEMBER SERVICES
COMMUNITY SERVICES
COMMUNITY EVENTS
RECREATION**



PAUL BEAM Director



Happy fall ya'll! With all the fun holidays coming up, just a friendly reminder from Architectural Policy and Procedures, 6.4- Outside seasonal, festive or holiday decorations and lights shall be installed no more than 30 calendar days prior to the event date and shall be removed on later than 30 calendar days after the event date. We can't wait to see all the creative minds in our community!!!

With summer coming to an end, it's time to pack up all the toys, boats, jet skis, trailers, motor homes and so forth. Please relocate them to a long term parking space until next season. This does not include your driveways. Memorial Day was the cutoff date and we have already begun to issue Courtesy Notices for the ones we have seen parked. All long-term parking, as defined in the SVLA Rules and Regulations, shall be relocated behind the front building line and no further back than the rear line of the structure. This area shall be a maintained, approved surface and be kept

free of weeds and all debris. All long-term parking areas shall be screened from view by a Committee approved wall, fence, or gate. Approved walls / fences / gates shall have a minimum height of five feet (5') and be designed to ensure that the long term parking area is not visible from public/SVLA property.

We realize after a busy day working and being out and about, property owners arrive home with their thoughts already inside their homes, thinking about what tasks they need to do. Because of our hustle and bustle lives, it's easy to overlook items that need a bit of attention. Should you receive a Compliance Request, first and foremost please remember the Compliance Request is a Courtesy Notice and not a citation. It is simply your Code Enforcement Teams way of calling to your attention something you may have overlooked. Please take the time to read the entire Compliance Request and view the attached photograph; then review the actual violation on the exterior of your residence that needs some attention. After reading your Compliance Request you may do one of the following:

A. Immediately make the correction which Code Enforcement Team will verify after the deadline date indicated.

B. Make arrangements as necessary (contractors, etc) then complete the Violation Response Form and return it to the SVLA Office. If necessary, complete an Archi-

tectural Application if your corrections involve changing the appearance of your residence (i.e. remove a tree, paint your exterior a new color, etc.)

HALLOWEEN PARTY
5 PM TO 7 PM
OCTOBER 31, 2016
Community Center
12975 Rolling Ridge Dr.
FREE FOR CHILDREN 12 AND UNDER
12 and older \$1.00
FREE HOT DOGS & PUNCH
GAMES CANDY PRIZES
All children must be accompanied by an adult with an SVL Member Card

Hunter Jones Catches a Fish!

The Coffee Break wishes to celebrates the good times in our community by sharing this photo of little Hunter Jones, son of Brittanie and Jeremy Jones of Spring Valley Lake.

THIS is what our community is all about!



Photo courtesy of The Spring Valley Lake Citizens Group
Find us on Facebook: <https://www.facebook.com/groups/SVLCG/>





Alice Koelsch (Schultz)
and Emmett Koelsch,
founders of Koelsch
Senior Communities.



What's Important to Your Family is Important to Ours

What sets Sterling Inn and Sterling Commons apart from other senior living communities is our family philosophy carried forward since 1958: "Treat all people with the respect they deserve and the special attention they need." With more than 50 years of experience you can be sure *our* family will take great care of *yours*.

THANK YOU for voting us
"BEST OF THE DESERT"
Retirement Communities

Assistance with Veterans Aid and Attendance
Pension Benefit and Long Term Care Insurance

STERLING INN

Assisted Living Independent Living

- Respite Stays
- 24 hour On-site
Licensed Nurses

17738 Francesca Rd.
Victorville, CA 92395

(760) 245-2999

Lic #366413246

STERLING COMMONS

Memory Care

- Respite Stays
- Care by the Hour
- 24 hour On-site
Licensed Nurses

17797 Lindero St.
Victorville, CA 92395

(760) 245-3300

Lic #366413245



SENIOR COMMUNITIES

SERVING SENIORS SINCE 1958

www.koelschseniorcommunities.com

Call us today for a personal tour.



SVL Veterans Club at the Shake, Rattle, and Roll Car Show

The SVL Veterans Club participated in the Shake, Rattle and Roll Car Show in support of the SVL Lion's Club on August 27, 2016 at Victor Valley College. We enjoyed the opportunity to make new friends and view all of the amazing cars and we look forward to participating in next year's event. Thank you to all of our volunteers who worked so diligently to make the day so successful and fun.





The SVL Veterans Club

NOTE: *There will not be a regular meeting on September 20 due to the banquet.*

You are invited to join us for our next meeting which will be **October 18, 2016** at 6:00 p.m.

SVLA Community Center

Room CB3

Victorville, California 92345

You can email us at svlveterans@gmail.com

or find us on Facebook

SVL Veterans Club



*It's time for a
Coffee Break!*

THURSDAY

September 15 at 10:00 a.m.

SVLA Community Center. CB1

Enjoy **FREE** Keurig Coffee and Tea
Bring sweet snacks to share! Meet neighbors!

**Participate in our
Book Exchange!**

(bring a book - take a book)

Fun, Food and great conversation
Help make a difference in our great community!

For further information
Contact: Dennis Verhagen

760-243-2128

Search Facebook TCBSVL





The Coffee Break

Great food, great fun, great friends celebrating the end of Summer with a BBQ! We invite you to join us as we meet monthly on the 3rd Thursday at 10:00 a.m. in room CB1 of the Community Center. Bring a book to trade for our Book Exchange, sweet treats to enjoy and join us for free coffee or tea. Contact Dennis Verhagen at 760-243-2128 for more information or search FACEBOOK for The Coffee Break, an SVL Club at SVLTCB.



**Hearing care –
it's what we do.
It's all we do.**

And, we've been the experts for 75 years!
We believe your hearing is too important to trust to just anyone.
It's crucial to choose a **qualified provider** who offers award-winning
technology along with compassionate care – like **Beltone**.



Look, she's wearing
Beltone Hearing Aids!

**You always get more... more care, more benefits
and more guarantees, including:**

- **FREE lifetime care - a Beltone exclusive**
- **FREE annual check-ups**
- **Lost, stolen or damaged coverage**
- **A wide variety of models - over 80 options**
- **Virtually invisible styles**

All at prices that fit your hearing loss, lifestyle and budget.

Beltone Hearing Aid Center Locations

17973 Bear Valley Rd., Suite 1, Hesperia Between I Ave. and Peach Ave. 760-956-9780	9661 Baseline Road Rancho Cucamonga Corner of Baseline and Archibald 909-944-9442	14758 Pipeline Ave., Suite D, Chino Hills In The Courts, Across from 24 Hr. Fitness 909-597-8900
--	--	---

Beltone Hearing Care Centers are independently owned and operated. Benefits of hearing instruments vary by type and degree of hearing loss, noise environment, accuracy of hearing evaluation and proper fit. Participation may vary by location. ©2012 Beltone.



Sally & Chris Johnson, Licensed Hearing Aid
Dispensers. Chris is also Cubmaster for Pack 574



**Call today to schedule your
FREE hearing screening!**



This free test is to determine if you can be
helped by Beltone Hearing Instruments.

Carpeteria

Flooring Centers

Serving You Since 1953



**Lifetime Warranty on Stainmaster Carpet with
Stainmaster pad
LASTS up to 50% longer and stays up to 30%
cleaner than other carpets!**

*Carpeteria has many happy customers. You can
become a happy customer too by giving
Carpeteria a visit. We know you will be
impressed. And by the way, when you stop in,
say hi to Joe. He's one of the good guys!*

**17260 Bear Valley Rd. • Victorville
(760) 955-9551 • (800) Floor~Me**

**For your virtual shopping experience,
visit us at: www.carpeteria.com**

25%

**OFF ALL HARDWOOD
& LAMINATE**

With coupon exp: 10/15/16

Hero's Discount

**SENIORS, MILITARY,
TEACHERS, FIRE & LAW
ENFORCEMENT
UP TO 40% OFF**

With coupon exp: 10/15/16

\$300 off

**ANY GRANITE
INSTALLATION**

With coupon exp: 10/15/16

Coupon must be presented at the time of
purchase. Discounts off retail price.
Cannot be combined with any other offer.

LUAU DINNER DANCE

2016



The Luau Dinner Dance was Saturday night, August 13, 2016 and it brought a little slice of paradise to SVL. The room was transformed into a tropical paradise and everyone came dressed in their Hawaiian attire. The evening started out with a Hawaiian style catered meal that included roasted chicken, roasted pork, rice pilaf, wok veggies and Hawaiian rolls, as well as a dinner salad. The meal was followed by a delicious dessert bar that consisted of Coconut Cream Pie, Boston Cream Pie with fresh strawberries, Key Lime Mini Cakes and Cupcakes. The Rocktops kept the night alive with their incredible performance. Thank you to all who joined us for this fun evening!

Apple Valley Auto Clinic

Location:

13600 Quinnault Rd #4
Directly across from
Apple Valley Post Office,
next to Tom's Burgers

Star Certified
Smog Station
Smog Check \$38

Oil Change
Special
\$29.95

Tire Rotation
+ Brake
Inspection
Just \$19.95
plus tax

760-247-1444



**ASIAN SPA
MASSAGE
GRAND
OPENING**

SPECIAL

- *Deep Tissue Massage-\$45
- *Ear Candling-\$20
- *30 min full body +
30 min foot massage - \$40
- *60 min full body +
30 min foot massage - \$60

\$5 off service
plus
free hot stone
essential oil

13295 Spring Valley Pkwy
(Next to post office)
Phone: 760-493-1305

JOSE (Joe)
BERRIOS
VVUHSD School Board

VOTE!

“LET’S PUT STUDENTS FIRST!”
SVL HOMEOWNER, TEACHER APPROVED

Endorsed by Victor Valley Teachers and pac 1239929

Planning Committee

By Jeri Lawrence/Committee Chairperson

At our last committee meeting, we decided to move on to other common areas of Spring Valley Lake and discuss those updates and or additions. Committee liaison from the BOD, Christopher Huntingford, will design (yet) another survey; this one being online and making sure there are as many community voices in the Meadowlark Park redesign as possible. That survey is currently available online on the SVLA website home page or send comments in an email to board@svla.com.

Our committee plans to visit with the Equestrian Committee to discuss some park needs for Playfair and Long Acres Park. If you are not familiar with these two parks, they are in the

Equestrian Estates. Both parks are very well maintained by our maintenance staff with plenty of space for community activities. Keep in mind that there are horses corralled on private properties as well as boarded at the SVL Equestrian boarding facility. So caution and respect for these horses and their riders must be met at all times. These issues will be at the forefront of any park upgrades discussed with the EE committee. We have informational posters for the Meadowlark Park project (the plan is to display those in the Spring Valley Lake Community Building's great room) and perhaps make posters for any plans for the other parks, as well. Stay tuned. 💎



2nd Thursday of the Month

Begins at 6:00pm (Doors open at 5:30pm)

Community Building (CB1) \$5.00 Entry Fee

For Reservations Contact Debbie: 760.245.8204



Meets 1st Thursday of Every Month

6:30-8:30 pm

Community Building CB3

Are you a Licensed HAM?

Are you interested in putting your license to use?

Join the Club!!

If you are interested or need more information

Contact: George Ellison 818-585-5759

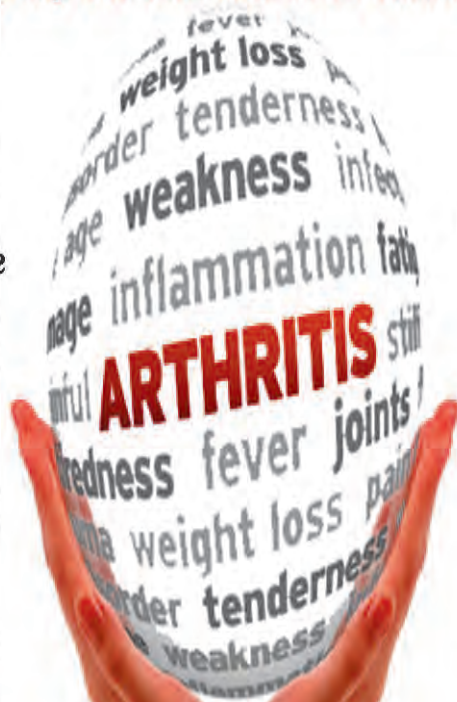
SVL Arthritis Exercise

Weekly Classes: Tues & Thurs 8-9 am

Community Building, CB3

Come and try out the exercises that can help!

Class teaches methods to ease pain caused by arthritis in fingers, hands, wrist, neck, spine, feet and other joints.



Exercises help prevent stiffness, deformity and improve your range of motion.

For more information call Instructor

Dottie Schiller: 760-243-4697

Please bring SVL member card or guest pass

SVL

Archery Club



Tuesdays 1hr Sessions Starting @ 2pm, 3pm & 4pm
Play Fair Park- EQ

All equipment is provided



Sign up for lessons & be a SVL Archery Club Member!

Beginners, Advanced Archers, All Ages Welcome!

Fun for family learning skills & all styles of archery

Participate in programs chartered by USA Archery:

- Junior Olympic Archery Development Program
- After School Archery Program
- Adult & Senior Training Program

USA Archery Coach Bob Gierlich & Wife Soundra, Certified Instructor

Call Bob: 760-243-6082 or email: mojavearcher@msn.com



August 19, 2016

CONCERT

AT THE BEACH!

Our last concert of the summer was on August 19, 2016. There were quite a few road blocks that had to be overcome, but it turned out to be a successful evening accompanied by the largest crowd we have seen yet. With the Blue Cut Fire running rampant and the 15 freeway being closed, we were kept on our toes all the way until the day of. Our food vendor cancelled the morning of the event but we were able to scramble and are so thankful to Tacos El Mr. who came through and helped us out very last minute. Due to the large crowd they ran out of food quite early but we are glad that some had the opportunity to enjoy their delicious tacos. Our entertainment for the evening was House Party who we are so thankful were able to make it up here despite the freeway closures and heavy traffic. They had some technical difficulties in the beginning, getting their equipment working properly but they worked it out and delivered an entertaining performance that kept the crowd alive all night. It was a great way to end another SVL summer. Thank you to everyone who came out and enjoyed the evening with us and thank you for being patient as we worked through some of the issues.



YOUR AD BELONGS IN THE



RIGHT HERE!

CALL 760.220.7096

OR EMAIL:

LoveMediaGroup@yahoo.com

Bulky Item Pick-Up

October 3rd-7th, 2016

Please have your bulky items for pickup on the day of your trash service!

Up to 5 items



-No item may be over 110 pounds

-Items must be curbside where your normal trash receptacles are located no later than 6:00 a.m. on the day of pick up- NO EXCEPTIONS!

-E- Waste items such as TV's, computers and monitors may also be picked up if they are properly packaged in boxes or appropriately wrapped to eliminate possible breakage during transport.

-Hazardous materials (paint, tires, oil, antifreeze, batteries) are not acceptable items.



Get back your quality of life
and live life to its fullest.

WORLD CLASS WOUND CARE, RIGHT IN YOUR NEIGHBORHOOD

DO YOU HAVE ANY OF THE FOLLOWING?

Slow-to-heal or non-healing wounds

Foot or leg ulcers or wounds

Surgical wounds that have opened

Non-healing skin grafts or surgical flaps

Internal injuries or open wounds from radiation therapy

Bone infection (called osteomyelitis)

Acute traumatic and crush injuries

At the Center for Wound Management and Hyperbaric Medicine, all we do is heal wounds. Our state-of-the-art, comprehensive wound care facility offers the most advanced treatments available, including hyperbaric oxygen therapy, a treatment proven to accelerate wound healing.



16077 Kamana Rd.
Apple Valley, CA 92307
www.stmaryapplevalley.com

For more information
or if you would like to
schedule a visit, call us:

760-242-2111



St. Joseph Health 
St. Mary

Center for Wound Care
and Hyperbaric Medicine

2nd Annual SVL Veterans Club Banquet

Join us on Tuesday, September 20, 2016

from 6:00 p.m. to 10:00 p.m. at the

Spring Valley Lake Country Club

Veterans Club members \$25.00 per person

Non-Members \$30.00 per person

Reminder: No regular meeting on September 20

For more information contact

Robert Read 760-961-6870



“A local leader in business and community service”

Congressman Col. Paul Cook (ret.)

“His commitment to law enforcement is unwavering”

Sheriff John McMahon

“A strong voice for efficient government.”

Assemblyman Jay Obernolte

“Committed to serving Spring Valley Lake.”

Jim Carr, Spring Valley Lake

COUNTY SUPERVISOR ROBERT LOVINGOOD has worked to make our neighborhood a better community to live, work and play. Crime is down 18% in Spring Valley Lake and just last year he worked to get roads repaved in our community – like Spring Valley Parkway.

ELECT ROBERT
LOVINGOOD
FOR COUNTY SUPERVISOR

A vertical advertisement for horse racing. It features a jockey in a blue and white silks riding a dark horse. The background is dark with a cracked glass effect. Text includes "BET HERE WIN BIG" in large yellow letters, "LIVE HORSE RACING VIA SATELLITE OPEN EVERY THU-SUN", logos for "TWC" and "SANTANA FAIR", and "1 FREE ADMISSION" in a dashed box. At the bottom, it says "SAN BERNARDINO COUNTY FAIRGROUNDS 14800 7TH ST, VICTORVILLE, CA 92395".

**BET HERE
WIN BIG**

LIVE HORSE RACING
VIA SATELLITE
OPEN EVERY
THU-SUN

TWC **SANTANA FAIR**

**1 FREE
ADMISSION**

SAN BERNARDINO COUNTY FAIRGROUNDS
14800 7TH ST, VICTORVILLE, CA 92395

The SVLA Breeze Business in View

Your Business Card Belongs in The
SVLA Breeze *See page 29*

**CALL TODAY
760-220-7096**

LOVE MEDIA GROUP

PO Box 1079 Helendale, CA 92342

*Business Cards that offer discounts or are framed as a coupon will
not be accepted. Email: LoveMediaGroup@yahoo.com*

Body Express

**SVL Group Exercise
Fully Body Workout**

**Warm up, Balance,
Weight Training,
Floor Abs/Core**

**All ages are welcome!
Must Bring SVL Member Card
or Guest Pass**

Classes held weekly:

Monday 8am - 9am

Wednesday 8am - 9am

Friday 8am - 9am

AFAA Certified instructor:

Jace Knisely 760-628-6416



Line Dance

SVL CLASSES

MONDAY'S:

BEGINNER 9:10AM - 10:10AM

INTERMEDIATE

10:10AM - 11:40AM

TUESDAY'S:

ULTRA BEGINNER 8AM - 9AM

BEGINNER 9AM - 10AM

INTERMEDIATE 10AM - 11:30AM

INSTRUCTOR

SU KIM 760-241-8823

LOCATION: COMMUNITY BUILDING



**MUST BRING SVL
MEMBER CARD OR
GUEST PASS**

Business in View

Riahn Hair & Nail

PERMANENT MAKEUP



Before



After
Looks natural
No Pain



13295 Spring Valley Parkway, Suite F
Victorville, CA 92395 (Next to Post Office)

760.881.3740

Riahn Oh



O 760.487.7253
P 760.962.6076
F 888.482.6905

FreedomMortgageNow.com/Bonnie-Viola-Hughes
Bonnie.Viola-Hughes@FreedomMortgage.com



Bonnie Viola-Hughes
Branch Manager

NMLS ID: 256537

Joseph W. & Deborah K. Brady
Supporting our Local Community



Bradco High Desert Report

The Bradco Companies: 760.951.5111
Barstow Real Estate Group: 760.256.6843
Alliance Management Group: 760.256.4663

Corporate License No. 01057618

Sarah ShaBazz-Ugwumba, M.Ed
CEO/Administrator



All About Tutoring, LLC

Tutoring, Test Prep, Homework Assistance
Serving the High Desert since 2000

We Come to You

760-900-5850
www.allabouttutoring.net
allabouttutoringses@gmail.com

**YOUR
BUSINESS
CARD
COULD
BE
HERE**

CALL
760-220-7096
FOR
DETAILS!



BECKY JORDAN

Owner of Applause Natural Tattoo Removal

SERVICES
PERMANENT MAKE UP
DERMA PEN TECHNOLOGY
TATTOO REMOVAL

Create A Beautiful You Forever!

PHONE: (760)954-0976

FOR A FREE CONSULTATION

www.GoAwayTats.com

COMMUNITY events

ASSOCIATION OFFICE HOURS
CLOSED MONDAYS
OPEN TUESDAY THRU FRIDAY 7:30 A.M. - 6:00 P.M.
PUBLIC SAFETY 24 HOURS 7 DAYS A WEEK

9/17	Victor Valley Health Fair	9am	CB1/ MLP
9/20	Equestrian Committee	6pm	EECH1
9/22	Architectural Committee	3pm	CB4
9/26	BOD Executive Session	6pm	CB4
9/27	BOD Open Meeting	6pm	CB1
10/1	Hoedown Dinner/Dance	5:30pm	EECH1
10/4	Citation Committee	5:30pm	CB4
10/7	Lions Club Poker	Call	CB1
10/12	Lake Committee	9am	CB3
10/13	Architectural Committee	3pm	CB4
10/16	Lion's Club Poker Tournament	3pm	CB1

Boat Test for Vessel Operator's Permit occurs Daily at 9am in CB4

SVL Committees

COMMITTEES	COMMITTEE CHAIR	MONTHLY	TIME/LOCATION
Citation Committee	Don Nelson	1st Tuesday	5:30pm CB4
Equestrian Estates Committee	Marvin Jobes	3rd Tuesday Every other Mth	6pm EECH1
Lake Committee	Pete Lawson	2nd Wednesday	9am CB3
Communication Committee	TBD	TBD	TBD
Architectural Committee	Ilene Bandringa	2nd & 4th Thurs.	3pm CB4
Community Plan Committee	Jeri Lawrence	3rd Thurs	6:30pm CB4
Budget Review Committee	TBD	Meetings vary	

SVL Clubs

CLUBS	FACILITATOR+ CONTACT
Amateur Radio Club - 1st TH, 7pm CB3	George Ellison KK6EFY 818-585-5759, george@4mailservice.com
Boy Scouts Troop 2226, 2nd, 3rd 4th M, 6pm, CB3	C.J. Cook 760-887-6200
Craft Club - 2nd & 4th TH, 10-3pm CB3	Sandra Dorman 760-962-1999
Cub Scout Pak 26 , 2nd, 3rd 4th M, 6pm, CB1	Britt Imes 760-900-3897
The Coffee Break Club-3rd TH, 10am-12pm CB1	Dennis Verhagen 760-243-2128, thecoffeebreak@earthlink.net
Lions Club Poker - 1st F, 7pm CB1	Don Nelson 760-964-7552
Rods & Relics Club - 2nd SAT, 8am CB4	Don Sedam 760-955-6052
Scouts Venture Crew 257, TH 6:00pm, CB3	Casey Hillers 760-780-7828, caseyhillers@gmail.com
Sewing Bee's - 2nd & 4th W, 9:30am - 2pm CB1	Virginia Granados 760-245-7801
Social & Fishing Club - Varies, CB	Mike Conroy 760-962-1094
Veterans Club - 3rd T, 7-8:30pm, CB3	Robert Read 760-961-6870
Yacht Club - 3rd TH, 6-8pm CB1	Dean Von 760-927-2226

SVL Recreational Classes

CLASS	DAY	TIME	LOC.	Instructor
Bocceball /Horseshoes	M.W.F	8 - 11am	MLP	Raul Paz 760-245-6311
Group Exercise (Body Express)	M,W,F	8 - 9am	CB1	Jace Knisely 760-628-6416
Archery Club	T	2pm, 3pm, 4pm	PFP	Bob Gierlich 760-243-6082
Power Yoga	T/W	6:30pm-7:30pm	CB3/ CB1	Jace Knisely 760-628-6416
Line Dance Beginner/Intermediate.	M	9:10-10:10am 10:10-11:40am	CB1	Su Kim 760-241-8823
Line Dance Ultra Beg./ Beg./Easy Intermediate	T	8-9am, 9-10am 10-11:30am	CB1	Su Kim 760-241-8823
Bunco 2nd TH./mo.	TH	6pm	CB1	Debbie Clements 760-245-8204
Arthritis Exercise	T,TH	8 - 9am	CB3	Dottie Schiller 760-243-4697
Healthy Mindfulness Reservations Required	F	9:10am - 10:10am	CB3	Barbara Hampton 442-242-7066

Key for Locations

Abbreviation	Name/Location of Facility
CB1	Community Building 12975 Rolling Ridge Drive (Great Room)
CB3	Community Building 12975 Rolling Ridge Drive (Small Room)
CB4	Community Building 12975 Rolling Ridge Drive (Conference Room)
EECH1	Equestrian Estates Clubhouse, 12660 Indian River Drive, Apple Valley
MLP	Meadow Lark Park, 12975 Rolling Ridge Drive
WB	West Beach, 13230 Country Club Drive
EB	East Beach, 13244 Country Club Drive

Jonathan's PHARMACY

- Exceptional Service
- Competitive Prices
- All Insurance Plans Accepted
- NOW Authorized Retailer
- Diverse Over the Counter Selection

- Quality Gift Items
- Organic or Natural Products
- Immunizations - Flu, Pneumonia, Shingles
- Vitamins, Supplements, Skin Care + Hygiene, Homeopathics, Aromatherapy, Food, Snacks, Drinks



**BRING THIS AD IN
AND RECEIVE**

\$10 OFF

Any in-store,
non-prescription purchase
With a new or transferred prescription.
One coupon per customer.

Located in the Apple Bear Center

19341 Bear Valley Road, Suite 103

Apple Valley, CA

(760) 983-2599

Fax (760) 983-2662

Helping Families Make Memories For 45 Years



New 2017s From Forest River And Pacific Coachworks

SALES - SERVICE - PARTS - SUPPLIES

Shop Today - Camp Tomorrow*

Consignments Welcome

We Service All Makes & Models

*restrictions apply - see dealer

Monday - Friday 9 - 5:30

Sat 9 - 5:00 | Sun 10 - 4:00



\$5 OFF your next purchase of

\$20 Or More At Range RV Parts & Supplies Store

11626 Mariposa Rd Hesperia, CA | 760.949.4090

Valid until 10/31/16 | Not valid on special orders or LP

www.rangerv.com

Riahn Hair & Nail

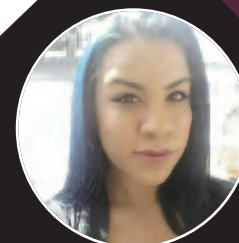
Open

Tues-Sat 9am-6pm

(760) 881-3740



Riahn



Nidia

Waxing Technician

*Offers
Excellent
Technique for
Japanese Hair
Straightening*



Sunnie is new to Riahn Salon
She has 15 years experience.
Enjoy a **20% discount** only by
Sunnie hair color service
WITH COUPON

**CHAIR FOR RENT
(Hair/Nail)**

\$250/MONTH

**INCLUDES FREE
ADVERTISEMENT IN
THIS AD!**



Suzy

Nail Technician

13295 Spring Valley Lake
Suite F
Victorville, CA 92395
(Next to the Post Office)



**the SVLA
BREEZE**
YOUR SPRING VALLEY LAKE ASSOCIATION'S OFFICIAL MONTHLY NEWSPAPER FOR THE JEWEL OF THE HIGH DESERT

*****ECRWSSSEDDM****

Postal Customer

PRST STD
US POSTAGE
PAID
Victorville, CA
PERMIT 5683

ADS 760-220-7096

Now Open Bear Valley Urgent Care

No Appointment Needed. Same Day Walk-Ins Accepted.



Jose de la Llana, M.D.



Yohannes Debebe, PA-C

Now Seeing Choice Medical Group Patients for :
Walk-in and Urgent Care Services
School, Sports, and Pre-Employment Physicals
Acute Illnesses, Injuries, Colds and More



12186 Hesperia Rd, Victorville, CA 92395
Monday - Friday, 1pm - 8pm
760-381-8848